

LOOP

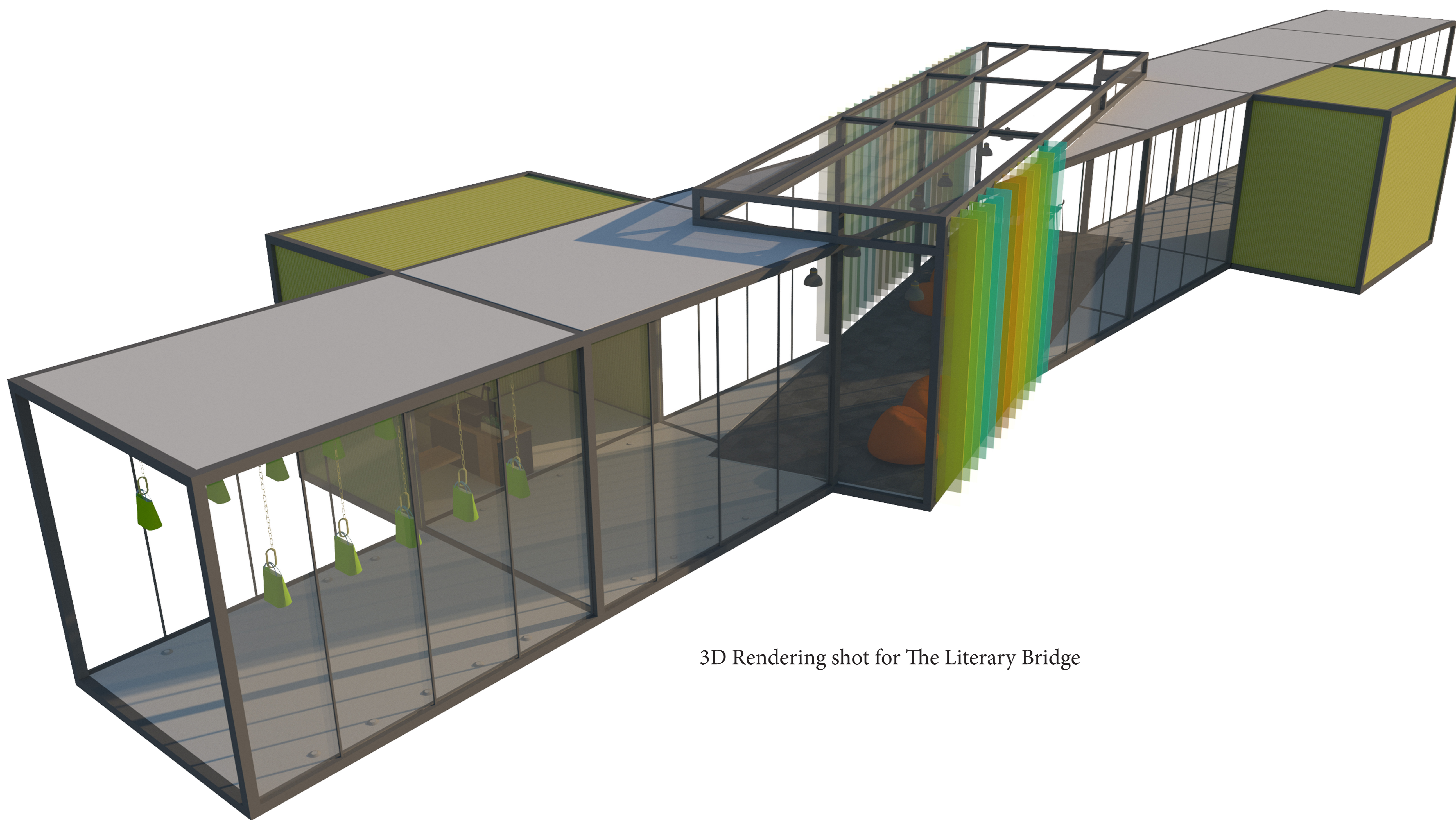
FRAME



"The Literary Bridge"

MA Interior Design

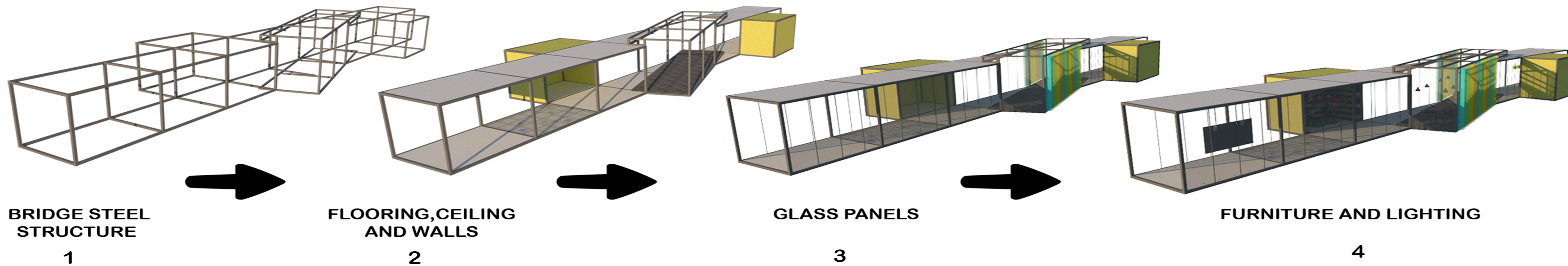
Maysoon Momani



3D Rendering shot for The Literary Bridge

The idea for the "literary bridge" came to me as I was walking in Oxford Road in Manchester. I noticed that the road is very congested with people made up of a cosmopolitan mix of students from all over the world. The reason for this is the location's proximity to two international universities (Manchester Metropolitan and Manchester University) and one of the biggest research hospitals in Europe. I also noticed that most people walking along are distracted with their mobile phones and tablets and that people are not interacting with each other at all. While passing the old buildings of the university and Manchester museum I reminded of the Ponte Vecchio Bridge in Florence. Here the historic bridge was developed with shops either side thus enclosing the bridge space which linked the historic centre with the famous Royal Parkway on the other side of the river. So I started to think about ways to connect people and places in the city and ways to connect cultures and to counter the digital distractions in life on our daily commutes. This "literary bridge" therefore, is both physical and metaphorical. A bridge between cultures, reading, knowledge and yet unconnected places.

Execution of bridge construction

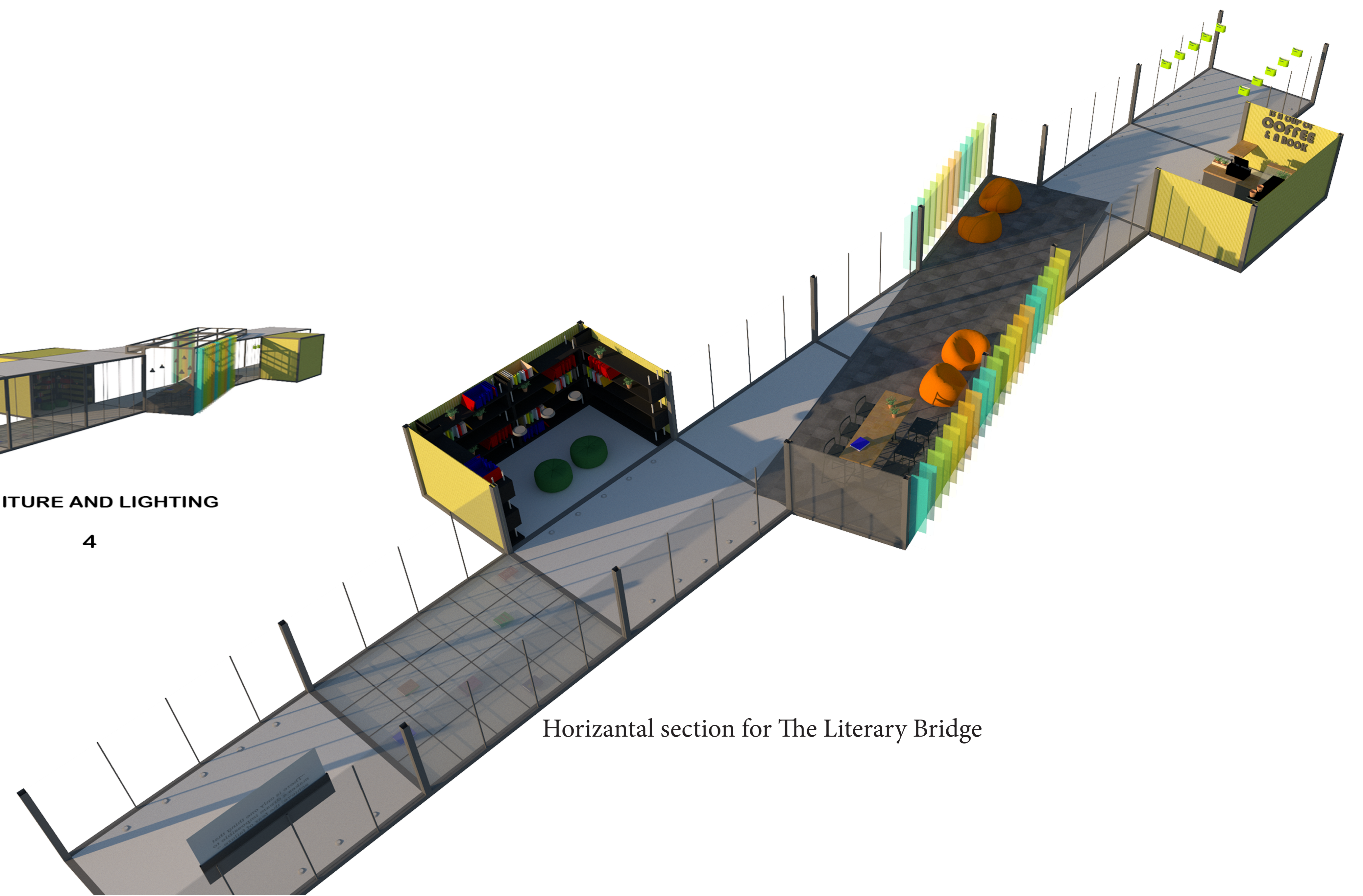


BRIDGE STEEL STRUCTURE
1

FLOORING, CEILING AND WALLS
2

GLASS PANELS
3

FURNITURE AND LIGHTING
4



Horizontal section for The Literary Bridge



Fig.1



Fig.2

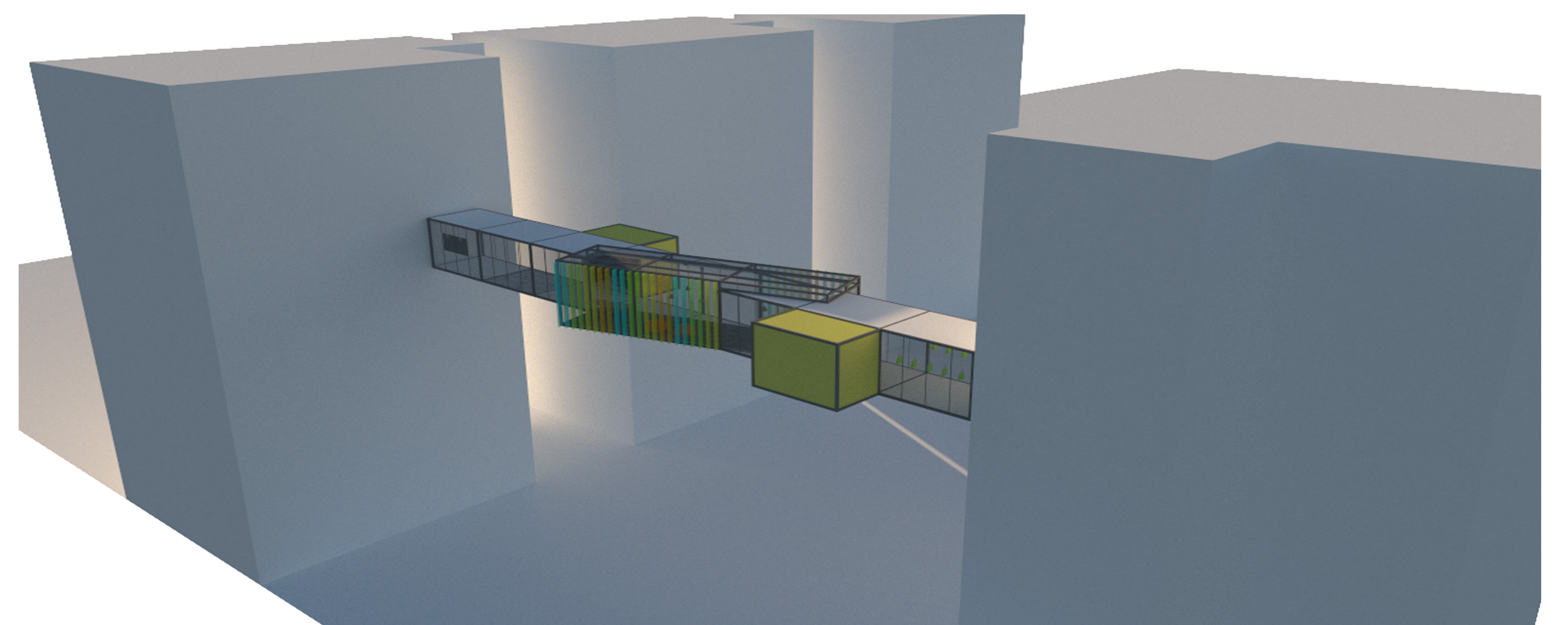


Fig.3

Exterior Mood Board:

The exterior design of the "Literary Bridge" Inspired from the buildings of Manchester Oxford Road, as I wanted it to be integrated with the spirit of the street.

1. The colored corrugated sheets.
2. the colored glasses.
3. the black steel structure.



3D rendering for The Literary Bridge

LOOP